



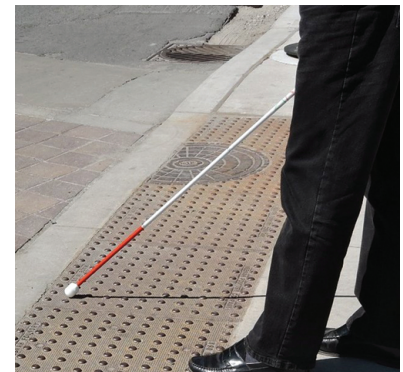
Exceptional Durability Simple Installation

Neenah Foundry Cast Iron Tactile Walking Surface Indicator (TWSI) plates are manufactured in strict accordance with ASTM A-48M-03 (2012), Class 35B Grey Cast Iron, and **comply to the following requirements:**

- AODA 80.25, 80.26 & 80.27 (Ontario's Disability Act -Defines size of plates and where required; at curb ramps and depressed curbs)
- OPSD 310.039 (specification for TWSI's, including identification required on face of plate with manufacturers name, country of manufacturer, year of manufacturer)
- ISO 23599 (Defines grid/dome size, required spacing and colour contrast)
- CSA B651 (Defines height of plate in relationship to surrounding concrete)
- City of Toronto TS 3.70.05.05 exceeded, ours was the cast-iron plate evaluated by the city on 03/28/14, which led to this standard
- ASTM C1028 (Static coefficient of friction test 0.9)
- ASTM A327 & D1709 (Impact resistance test- no damage at 94J)
- ASTM C501-84 (Abrasion wear index >8200)
- ASTM D482 (Adhesion to concrete test >5000 lbs.)
- Neenah's plate has ribs cast on the underside for concrete adhesion, 4 vent holes to eliminate air pockets beneath the plate, and is 8mm thick

Tactile Walking Surface Indicators (TWSI) are used in the following applications:

- Curb Ramps
- Top of Stair Landings
- Multi-Modal transit stations
- Pedestrian Crossings
- Wheelchair Ramps
- Transit Platforms

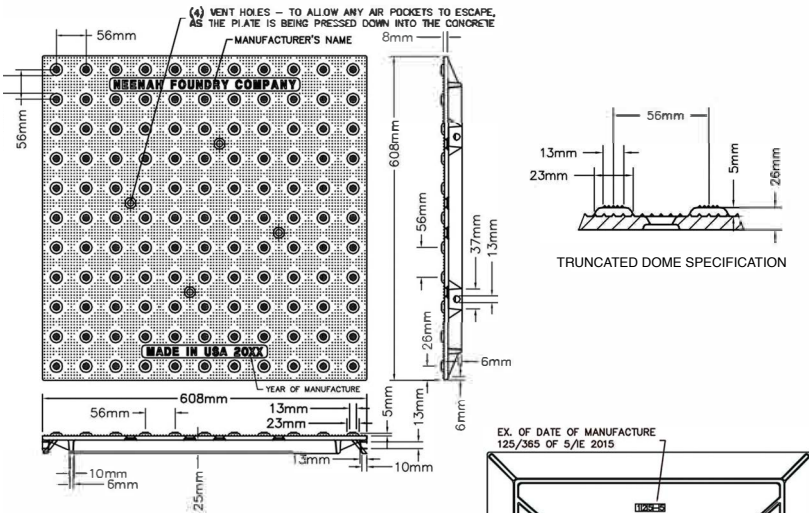


Neenah by Crozier Advantages:

- Light modernized casting (avg 60lbs/plate)
- Quick-Connect option available for time saving installation on straight plates
- Straight and radius plates, bolts included.
- [City of Toronto and OPSD requires that plates be either Bolted or Quick Connect](#)
- Installation lifting hangers provided
- 10 year warranty = 5 year Neenah + 5 year by TWSI by Crozier
- Typically 5000+ plates in inventory at all times
- Aimco Blvd., Mississauga Warehouse hrs. 8am-8pm. Delivery options available.



Tactile Walking Surface Indicator (TWSI) with Truncated Domes



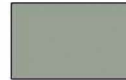
Note:
 Plate shown is the 24B.
 Dome dimensions can vary as plate size changes.
 All plates are compliant to ISO 23599:2012, Sec. 4.1.2.4. and Canadian and Ontario standards.

PROFESSIONAL ASSOCIATIONS

TWSI by Crozier is proud to support the following organizations:



COLOUR



Uncoated

OPSS 351.05.06 mandates non-coated plates. Silver is the unpainted natural colour from the mold. This oxidizes via a non-pitting protective surface rusting process to the natural patina bronze colour shown below.

TWSI CAST IRON SIZES

Straight		Radius	
24B/Q	(610 mm x 610 mm)	6' (536.2791 mm)	20' (466.0655 mm)
30B/Q	(762 mm x 610 mm)	8' (525.6423 mm)	25' (592.1208 mm)
36B/Q	(914 mm x 610 mm)	9.5' (751.4166 mm)	35' (552.2233 mm)
		15' (585.7557 mm)	

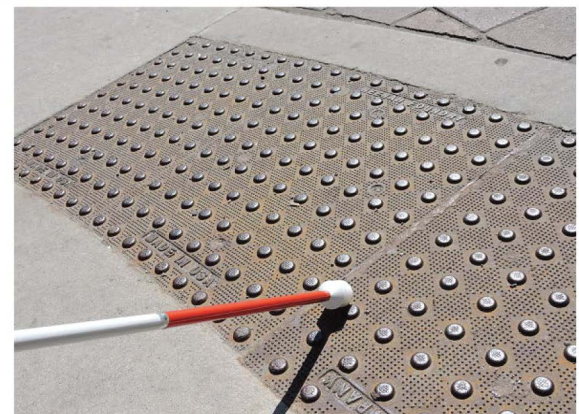
Straight plates available in "Q" Quick Connect and "B" Bolted Together options.

TWSI WEBSITE FEATURES

www.twsi.ca

Website Downloads

- AutoCAD and PDF Files
- Installation video
- Written installation instructions
- Plate specifications
- Plate combinations for 50+ different radii



TWSI by Crozier

18 King Street East, Suite 1400
 Toronto, Ontario, M5C 1C4
 Canada
 Rev. 12.2021

Phone: 1.866.624.9722 or 416.214.7727
 Email: sales@crozier.ca